

Made with Metropix ©2025



A four bedroom extended semi-detached home

- ✓ Super Extended Home
- ✓ Four Bedroom Semi-Detached
- ✓ Two Reception Rooms
- ✓ Covered Car Port & Garage
- ✓ Gorgeous Gardens
- ✓ Vegetable Plot Area & Greenhouse
- ✓ Assorted Sheds
- ✓ An Absolute Must View Home

Asking Price £260,000

Harris Shields Collection

Harris Shields Collection, 25 Northway, Scarborough North Yorkshire, YO11 1JH

01723 341557
mail@harris-shieldscollection.uk
<https://harris-shieldscollection.uk/>

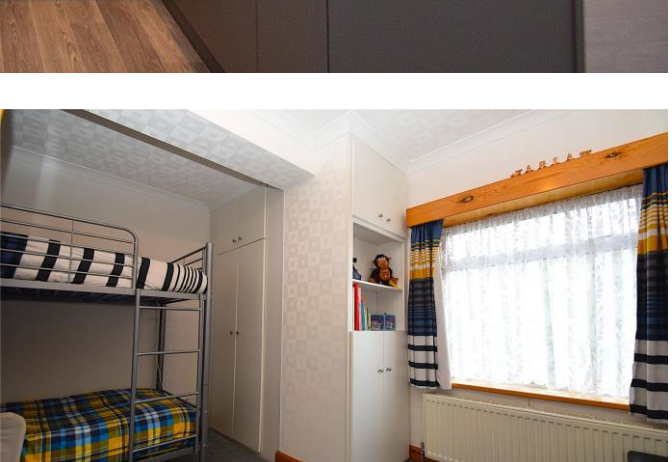
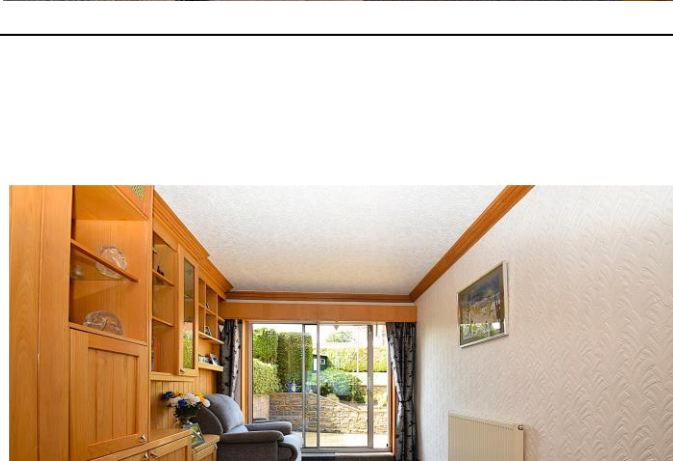
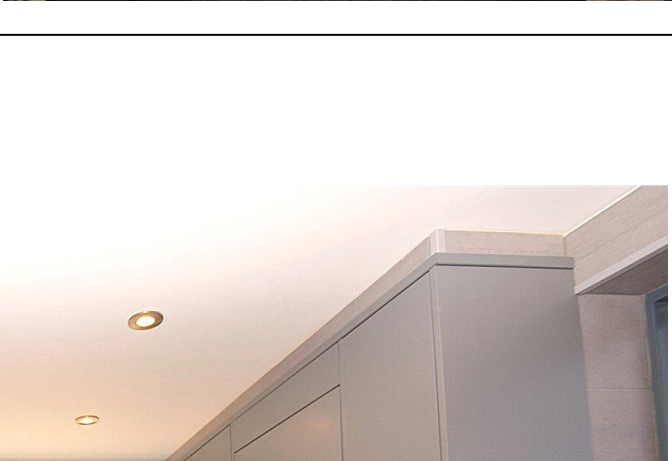
Description

A superbly extended and beautifully maintained four-bedroom semi-detached home, situated in an elevated position on the ever-popular Redcliffe Road,. Offering generous living space, a fantastic rear garden with sea glimpses, and excellent parking, this home is ideal for families seeking space, style, and coastal charm. The ground floor comprises a welcoming entrance hallway, spacious lounge, additional sitting/dining room, and an impressive kitchen/breakfast room complete with breakfast bar and integrated appliances. Upstairs, the property offers four well-proportioned bedrooms and a modern family bathroom. Some rooms enjoy elevated views, including partial sea views. Externally, the home boasts a superb extended garden with a south westerly lawned area, patio, vegetable plot, greenhouse, and three sheds perfect for keen gardeners. There is also a separate garage, a covered double carport, and ample off-street parking.

This exceptional home is ready to move into, located close to local schools, transport links, and Scarborough’s stunning coastline

Additional Information

Council tax band C



Opening doors
for over 60 years

Harris Shields
Collection